

 Digital Signage

## melford **WINDOW DISPLAY**

55" ultra-high brightness window display designed to display outward facing content, even in direct sunlight

Sunlight readable IPS panel designed for 24/7 use

Smart temperature control

Lightweight enclosure

Super high contrast ratio

Power timer

### ADDITIONAL FEATURES



Sleek thin bezel



Ambient light sensor



Ultra resistant to blackening



Integrated Android media player



Landscape or portrait



3,500 cd/m<sup>2</sup> panel

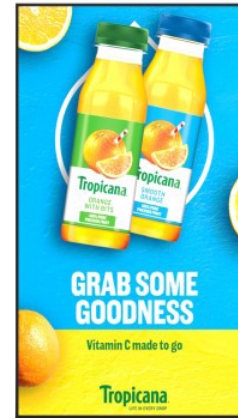


Plug and play content



Optional network upgrade

[melfordtechnologies.com](http://melfordtechnologies.com)



Presenting the  
Melford Ultra-High  
Brightness Window  
Display range  
**melford**



3,500CD/M2 SUNLIGHT READABLE



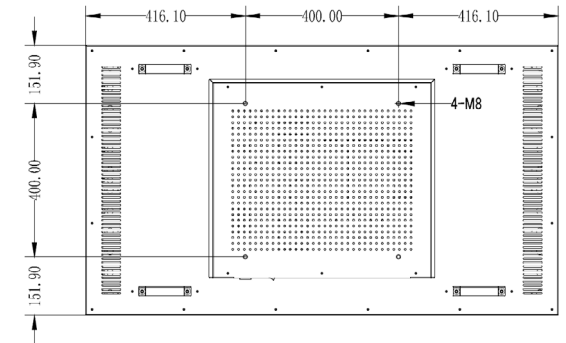
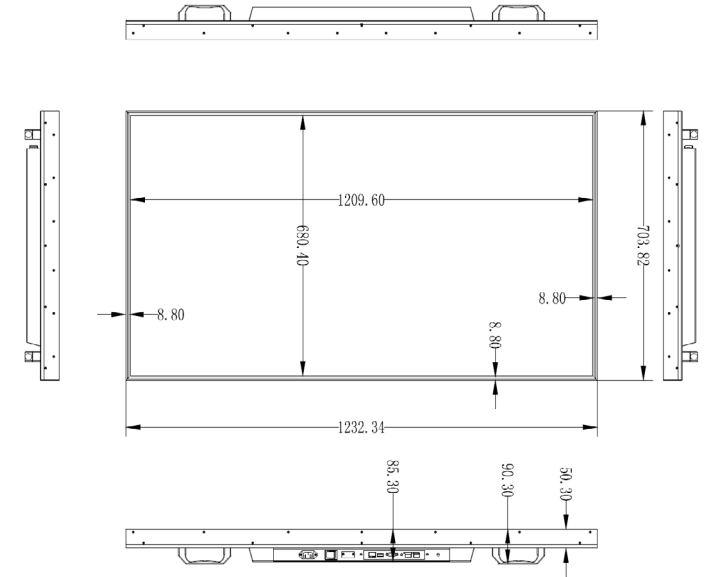
SMART TEMPERATURE CONTROL



LIGHTWEIGHT ENCLOSURE



24/7 IPS PANEL



SUPER HIGH CONTRAST RATIO



POWER TIMER



USB PLUG AND PLAY



OPTIONAL NETWORK UPGRADE



melford

## 55 Inch

Panel	Resolution	1920 x 1080
	Bezel Size (mm)	8.8
	Display Area (mm)	1209.6 x 680.4
	Aspect Ratio	16:9
	Brightness (cd/m <sup>2</sup> )	3,500
	Colour	16.7M
	Viewing Angle	178°
	Contrast Ratio	1300:1
	Blackening Defect Free	Up to 110°C (230°F)
AV Inputs	Video	HDMI, VGA
	Audio	Audio Socket (3.5mm)
Power	Power Consumption (W)	288
	Input Voltage	AC110~240V (50Hz~60Hz) (Manual switching necessary)
Mechanical	Unit Size (WxHxD mm)	1232.34 x 703.82 x 85.3
	Package Size (WxHxD mm)	1350 x 811 x 223
	VESA Holes (mm)	400 x 400
	No. of Handles	4
	Net Weight (kg)	31
	Gross Weight (kg)	40
Environmental	Surface Panel Temperature	Up to 110°C (230°F)
	Operating Temperature	0°C to 50°C
	Storage Temperature	-30°C to 60°C
	Operating Humidity	10% to 80%
	Storage Humidity	5% to 95%
Computer	Media Formats	Video (MPG, AVI, MP4, RM, RMVB, TS), Audio (MP3, WMA), Image (JPG, GIF, BMP, PNG)
	Media Resolution	1920 x 1080 / 1080 x 1920
	CPU	Quad-Core ARM Cortex A17, 1.6GHz
	GPU	Quad-Core ARM Mali-T764
	RAM	DDR3 2GB
	Internal Storage	8GB eMMC
	USB	1 x USB (OTG/HOST), 1 x USB (HOST)
	LAN	100M/1000M Ethernet (Network Version Only)
	Wi-Fi	802.11b/g/n/ac (Network Version Only)
	OS	Android 7.1
	Graphic Engine	OpenGL ES 1.1/2.0/3.0/3.1, OpenCL 1.1, Renderscript, Direct3D 11.1
	Accessories	Included
Optional		Network Upgrade, Wall Mount, Floor Stand/Trolley, Ceiling Mount, Table Stand
Warranty	Warranty Period	3 Year Warranty
	Technical Support	Lifetime

### Why Melford?

Melford Technologies have been offering innovative technology solutions for over 50 years.

We provide experienced professional design, project planning, configuration, deployment, and maintenance services for a full one stop shop.

We can assist with the design and manufacture of your digital signage solution from the blank piece of paper at the initial meeting through to installation and post-sales support.

### Contact Us

+44 (0)1494 638 069

info@melfordtechnologies.com

melfordtechnologies.com

